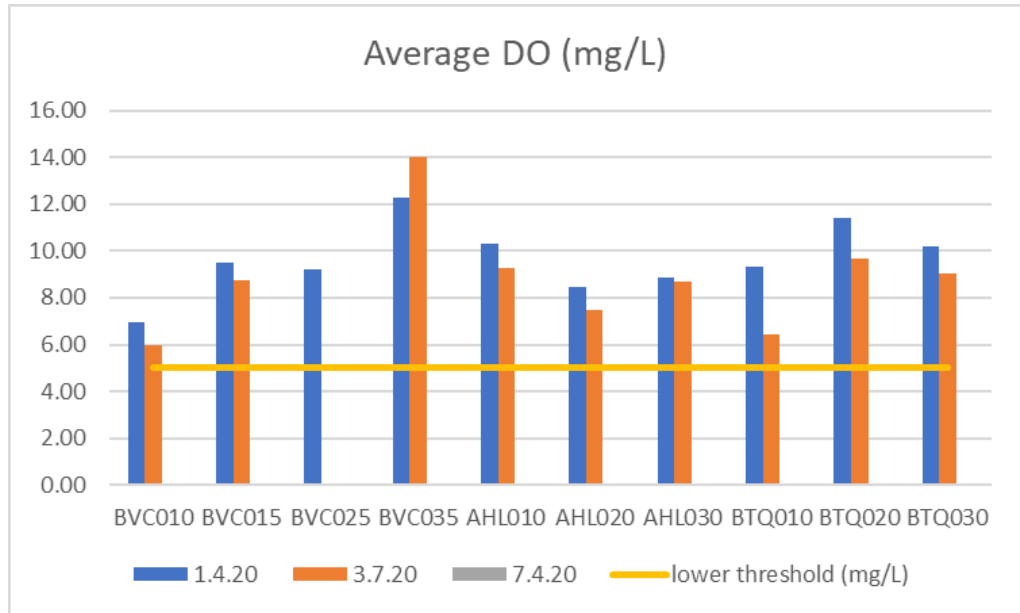


NSDCWMP DATA JAN-NOV 2020

Where shown, the horizontal lines indicate acceptable minimum values (DO), maximum values (ammonia, turbidity, total phosphorus, E. coli), or an acceptable range (pH) for inland fresh water sources.

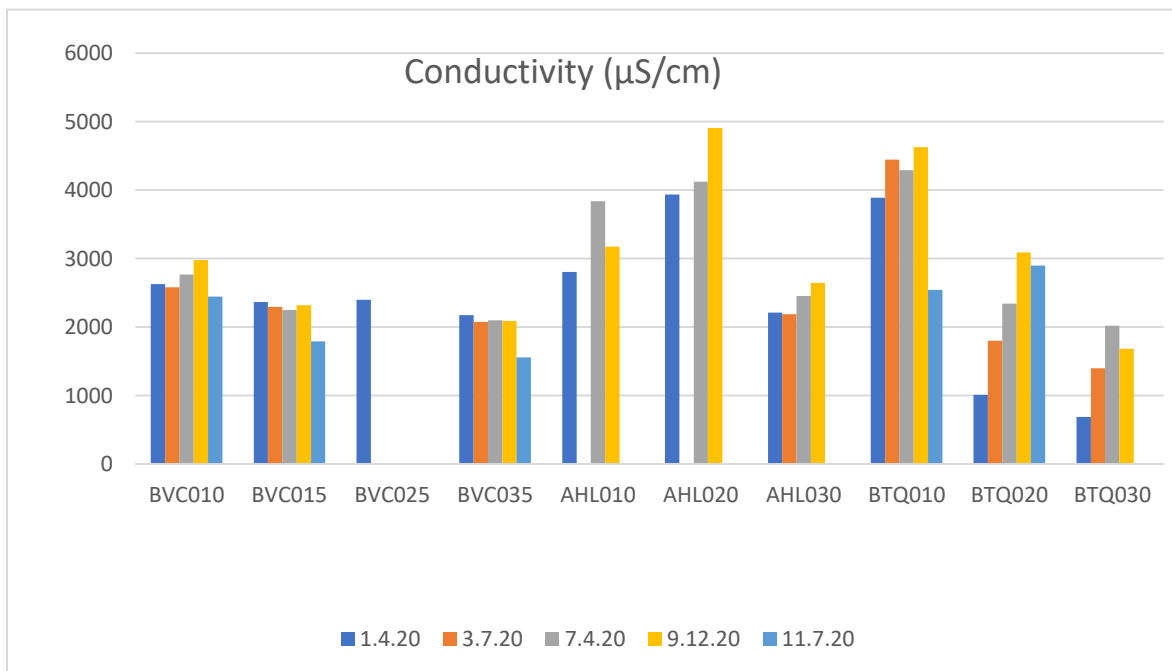
NOTE: The 11/7/20 sample date was a storm event and only Buena Vista Creek and Batiquitos (San Marcos watershed) were sampled. Data for Agua Hedionda watershed was obtained on 11/10/20.

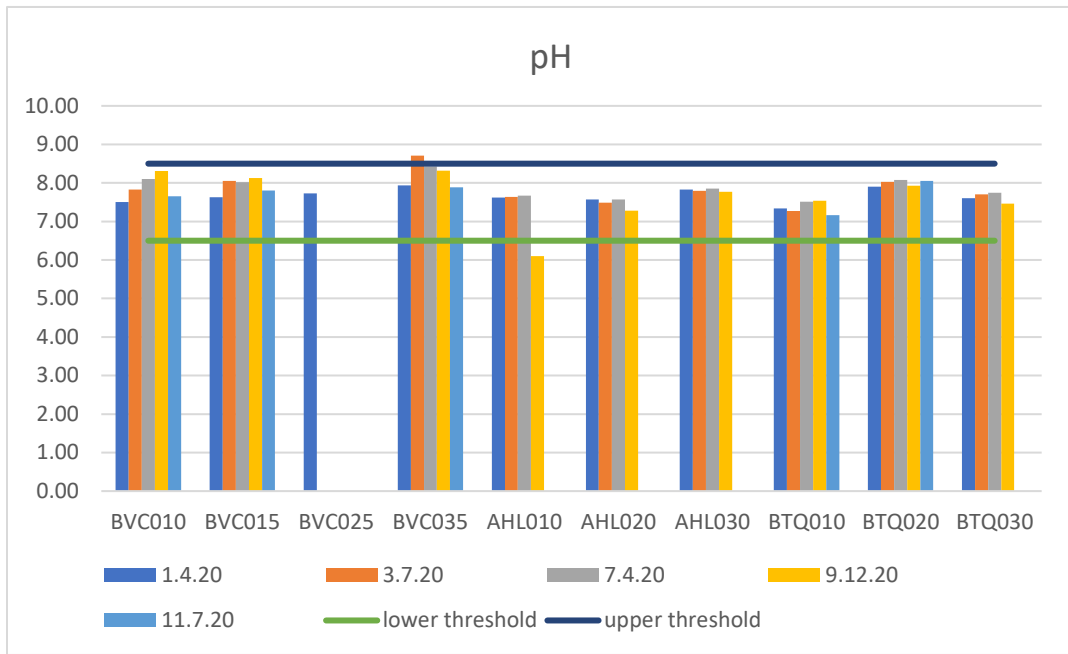
FIELD DATA:



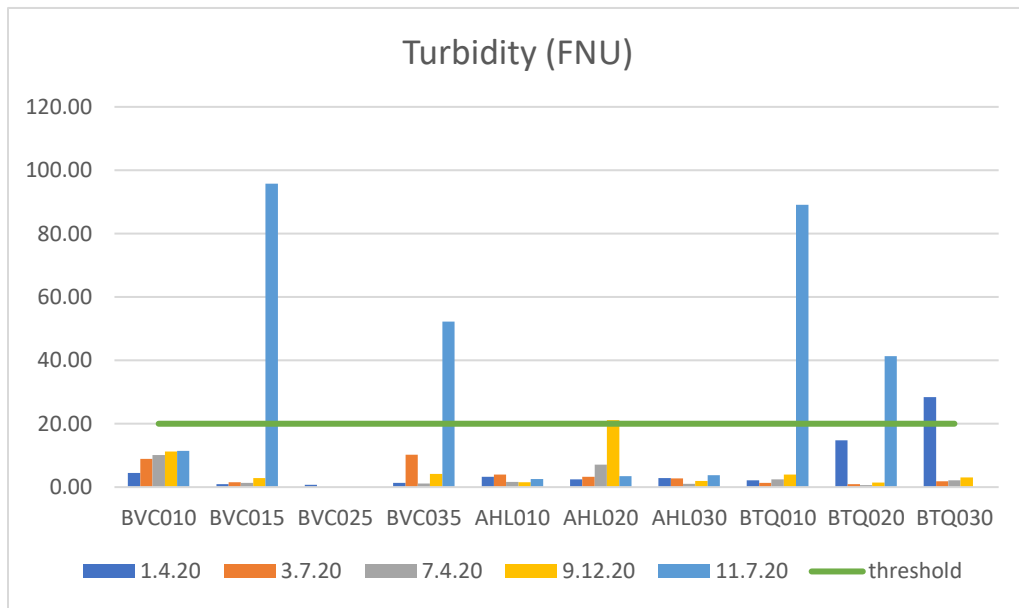
No dissolved oxygen measured after March due to COVID protocols

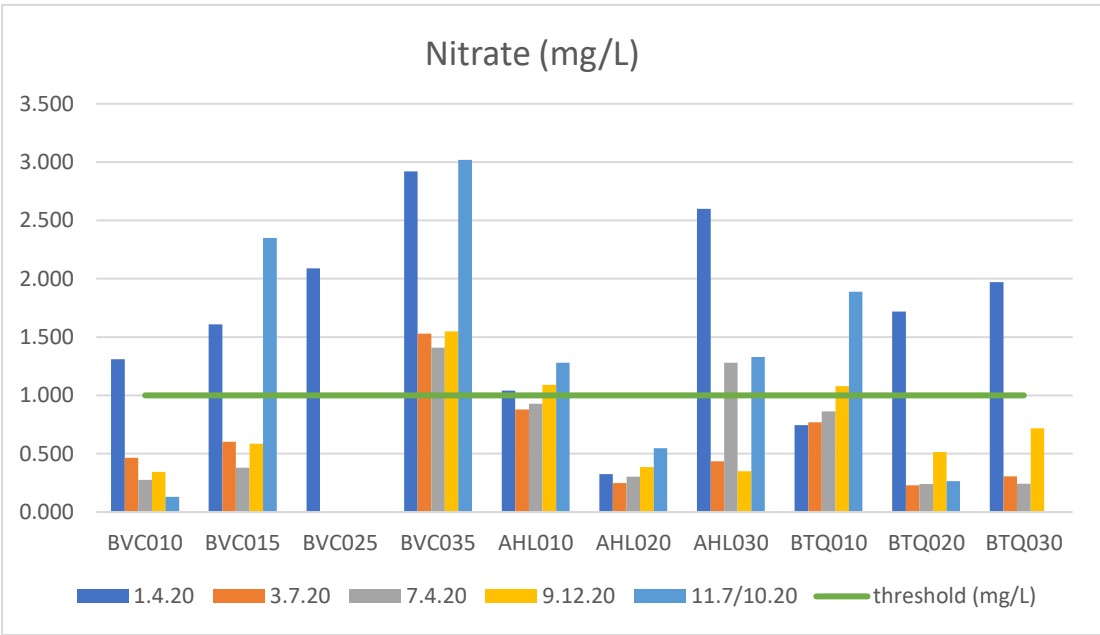
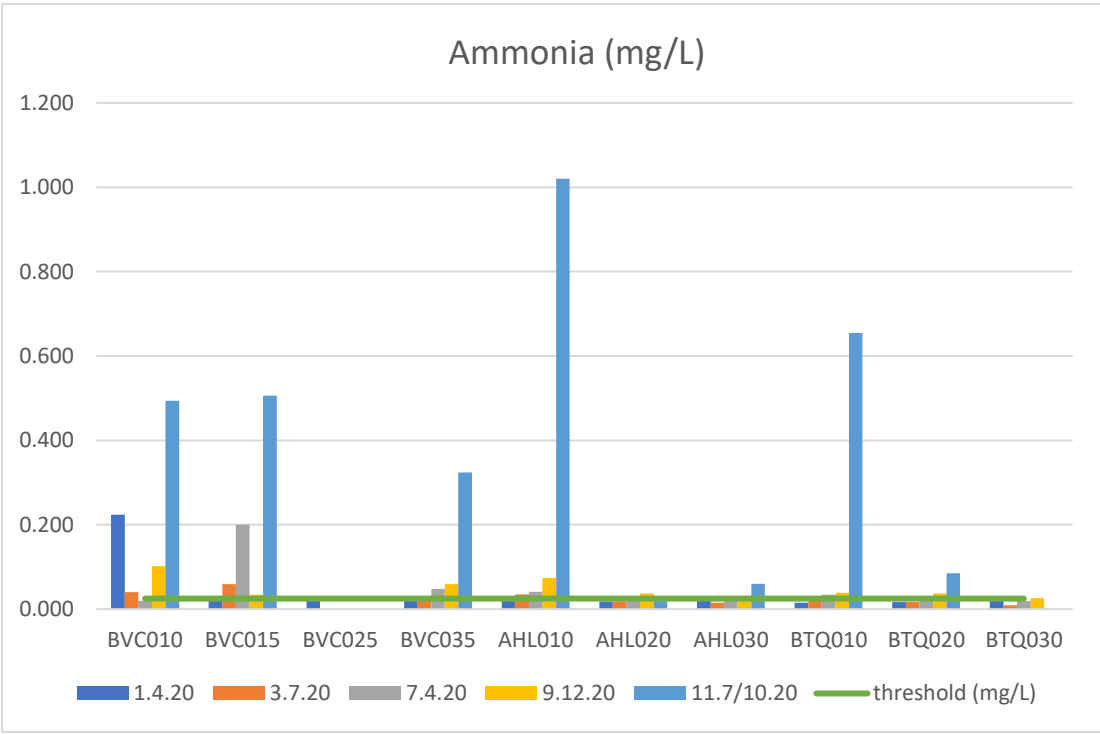
Conductivity and pH were measured in the lab (not the field) for July – November.

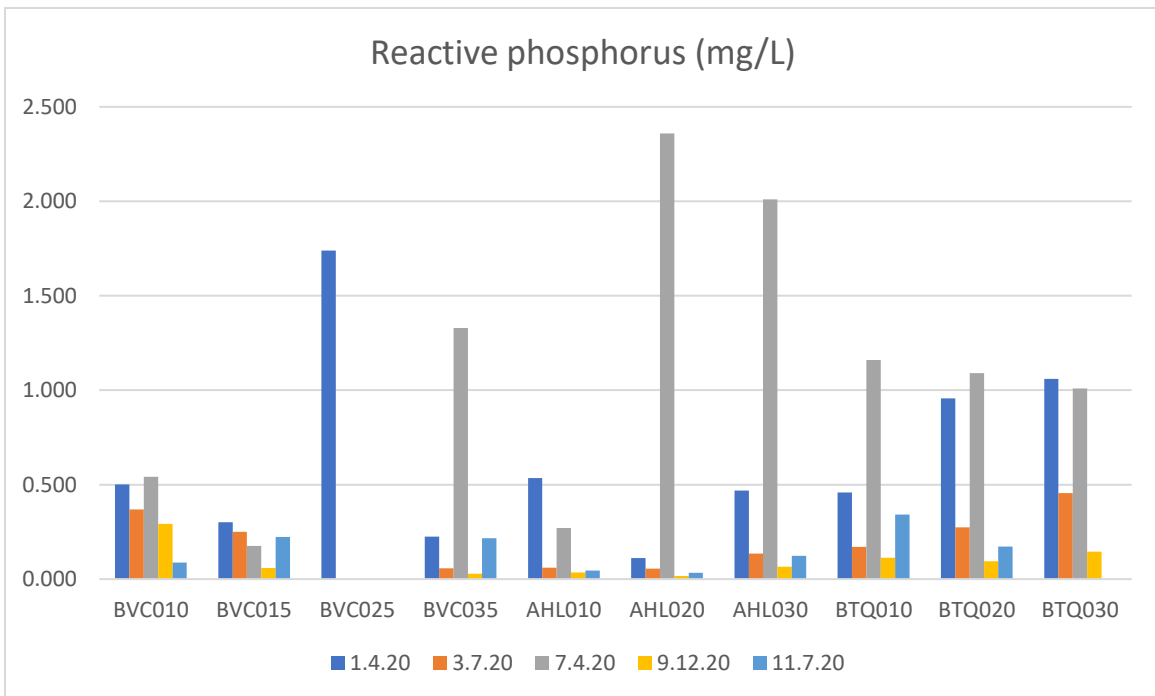
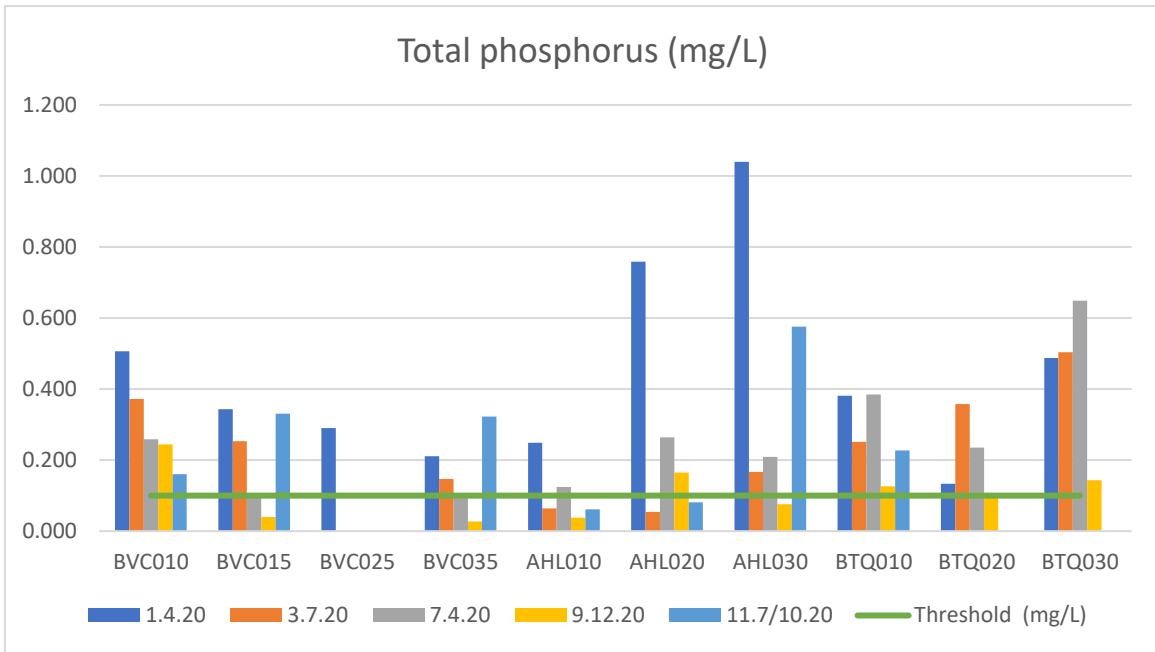




LAB DATA:







Bacteria: Maximum measurable MPN/100 mL with IDEXX Colilert is 24160.

