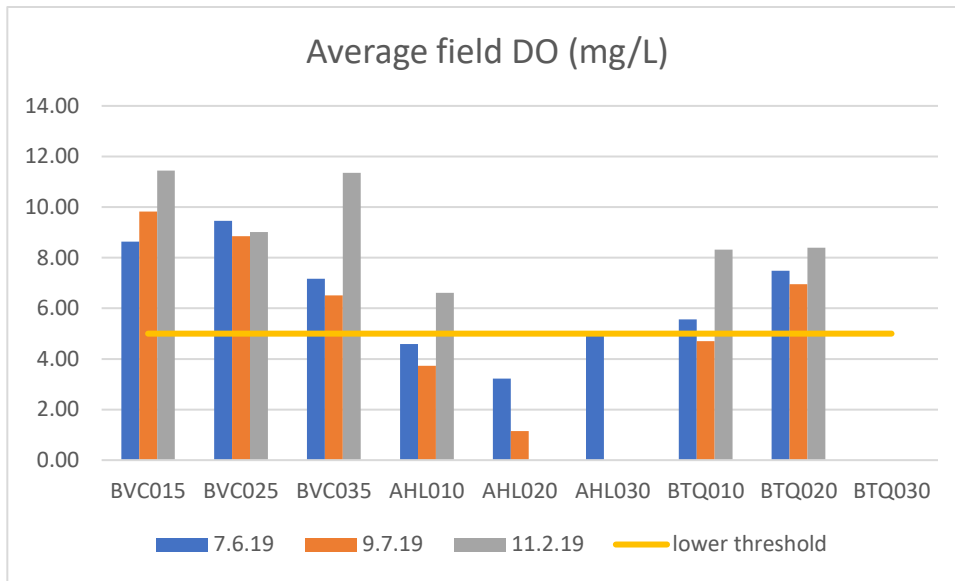


NORTH SAN DIEGO COUNTY WATERSHED 2019 REPORT

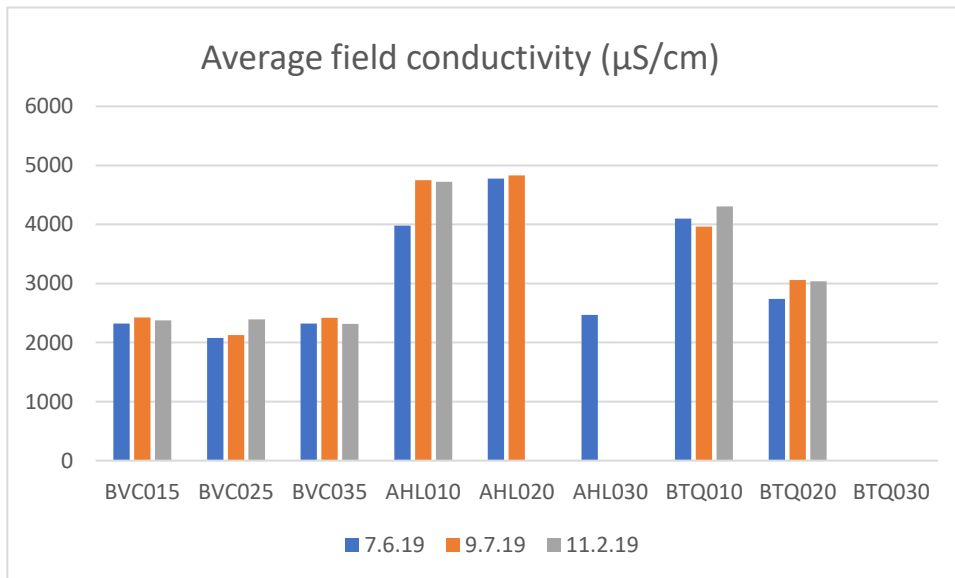
Where shown, the horizontal lines indicate acceptable minimum values (DO), maximum values (ammonia, turbidity, total phosphorus, *E. coli*), or an acceptable range (pH) for inland fresh water sources.

FIELD DATA:

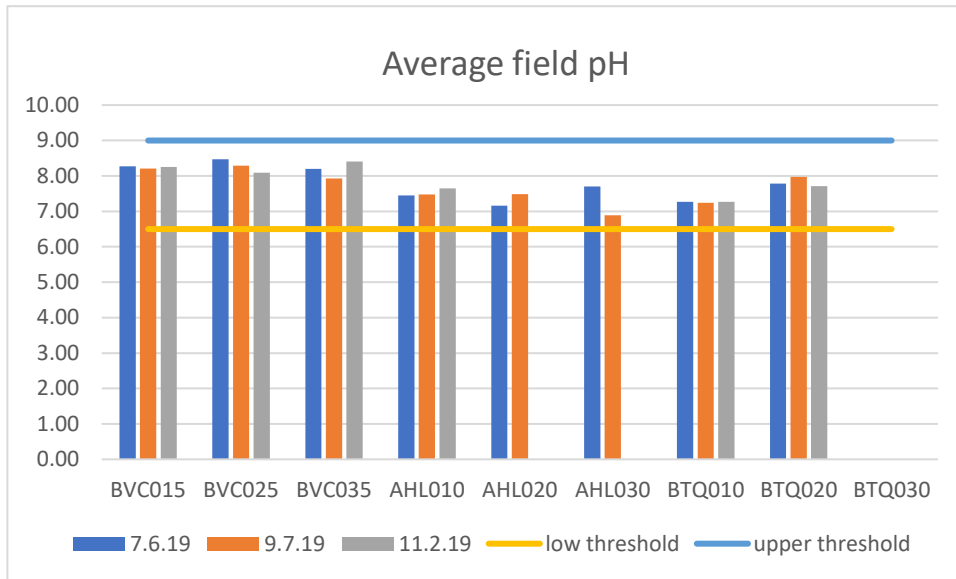
Dissolved Oxygen (DO)



Conductivity ($\mu\text{S}/\text{cm}$)

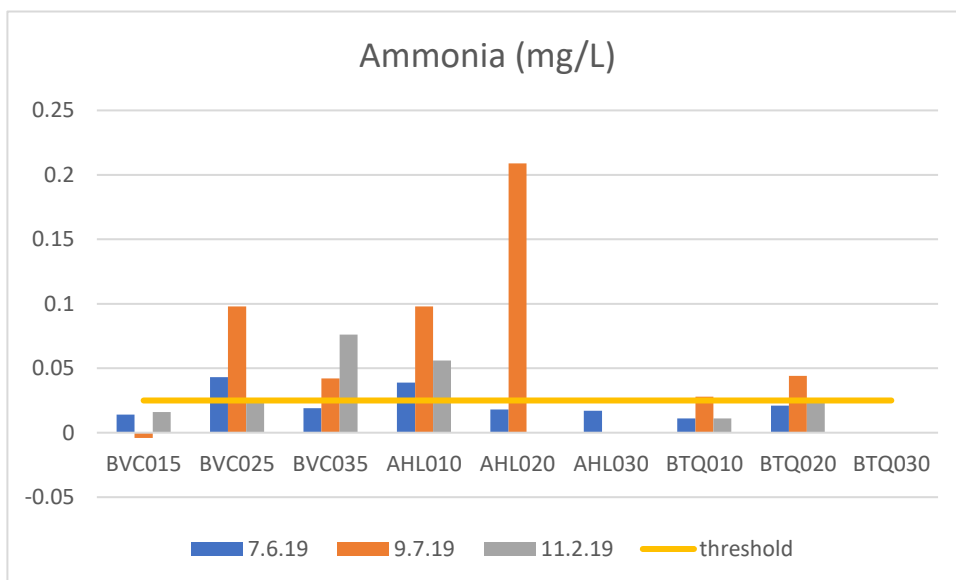


pH

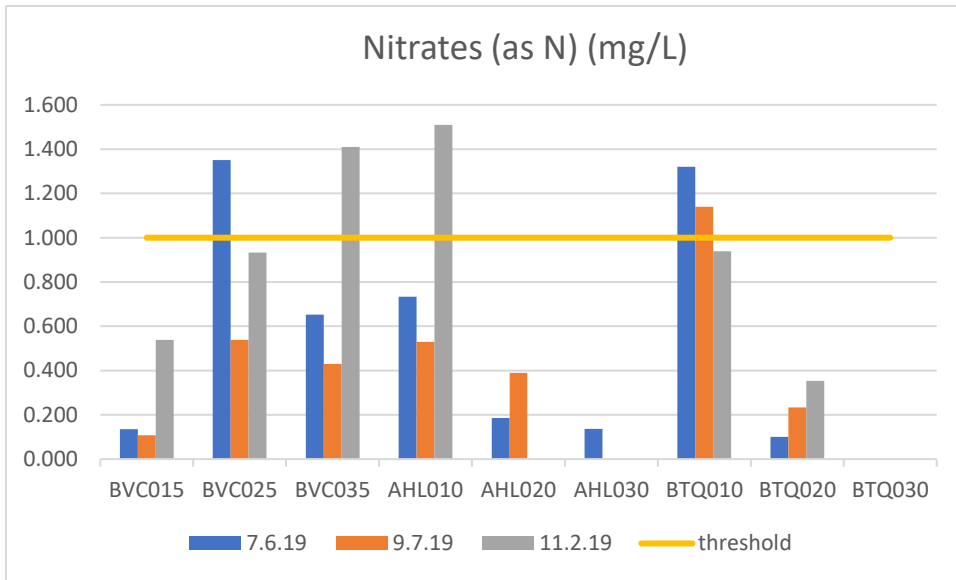


LAB DATA

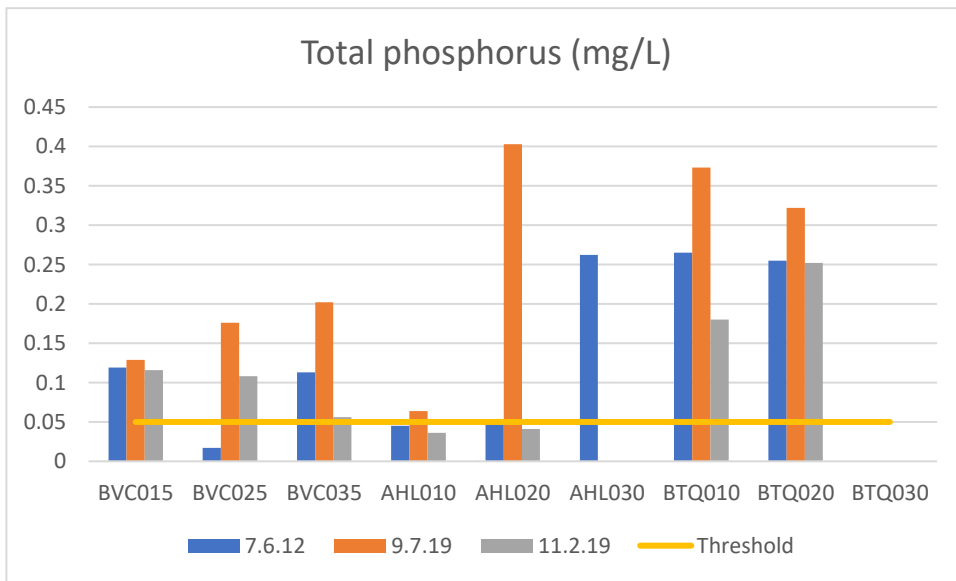
Ammonia as N (mg/L)



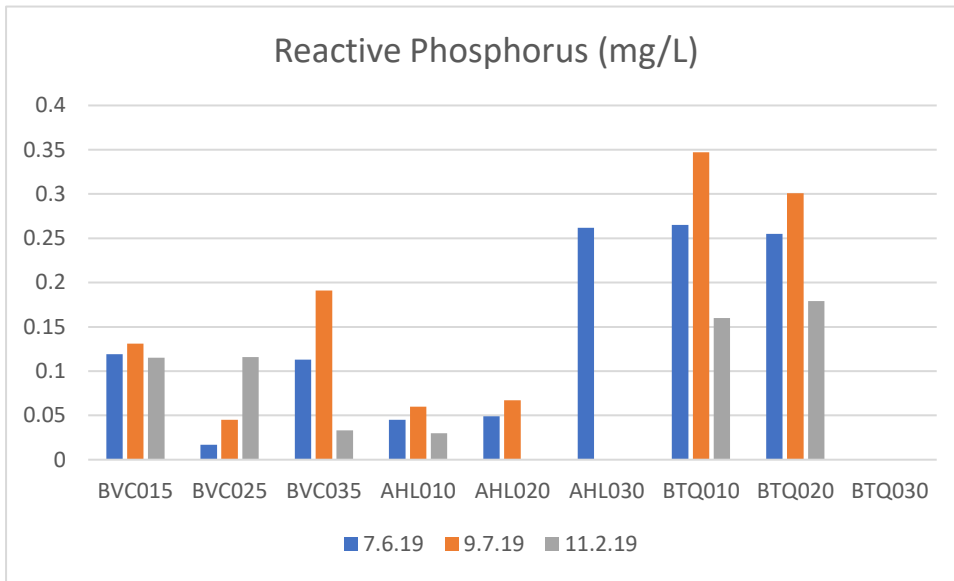
Nitrates as N (mg/L)



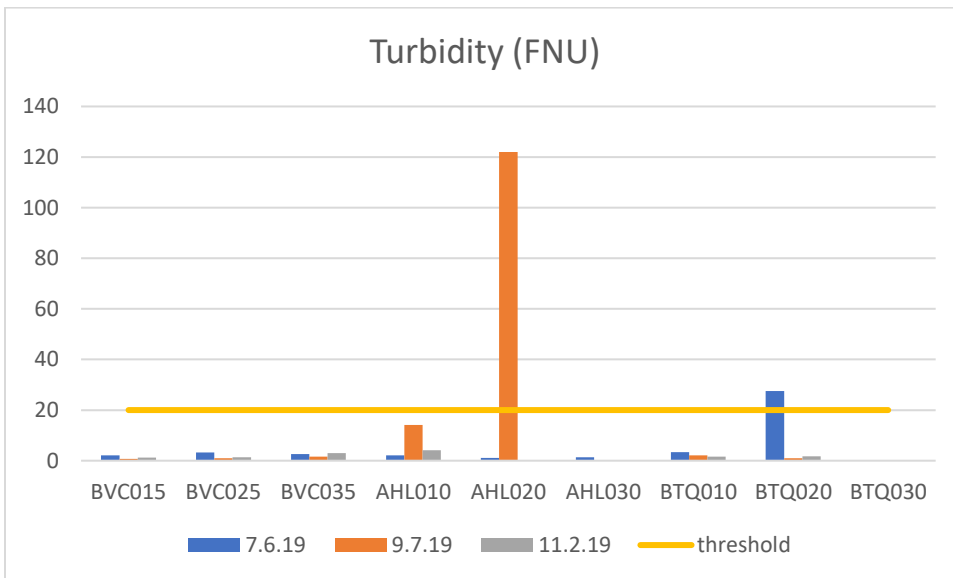
Total Phosphorus (mg/L)



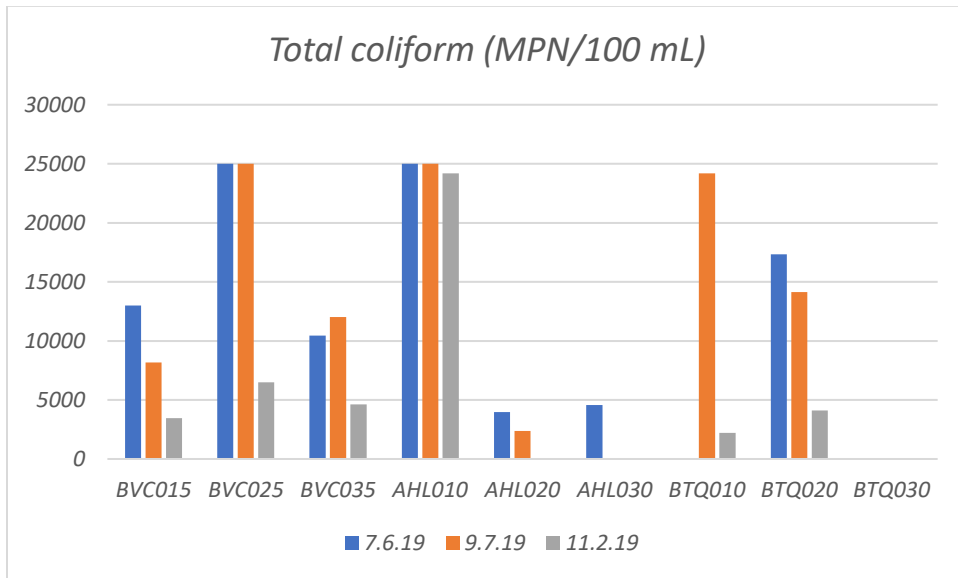
Reactive Phosphorus (mg/L)



Turbidity (FNU)



Total Coliform (MPN/100 mL)



E. coli (MPN/100 mL)

